

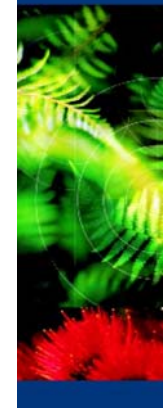


Massey University

Volunteering Australia 12th National Conference 2008

**Volunteers in an Ever-Changing
World – A View From Across
the Tasman**

Te Kunenga
ki Pūrehuroa



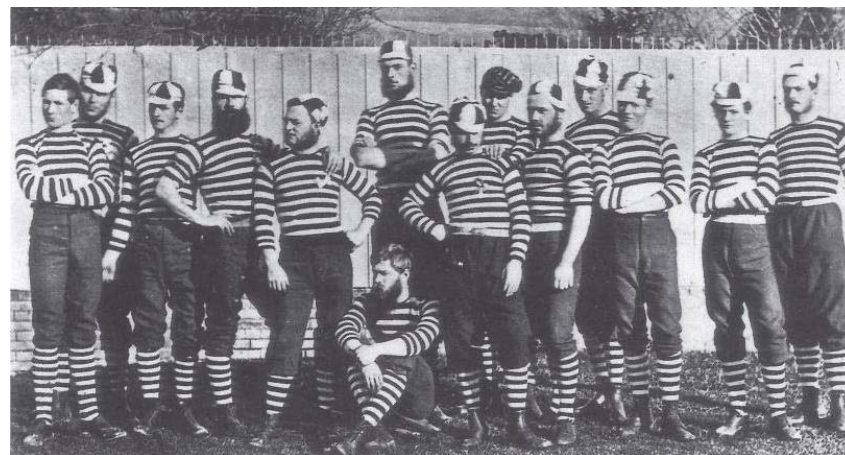
Honouring our volunteering histories in a time of change

Te Kunenga
ki Pūrehuroa



General themes in New Zealand's history of voluntary action

- Timing of settlement as Anglo-settler colony – inheritances, especially of 'expressive', member-directed societies, sporting bodies;
- Under-development of 'other-directed' charities;



THE FIRST WOMEN JUSTICES IN DUNEDIN.

General themes (cont.)

- Common law legal framework part of this inheritance
- Strongly complementary relationships with government & accessibility of politicians in a small nation state
- Expression of global trends
- Contribution of Maori organisations

The 'Social Glue' of a colonial society

- Churches
- Sports teams/events
- Cultural pursuits
- Friendly societies/lodges

First key period for organised volunteering – 1880s -1900s

- Population sufficiency
- Improved transport
- Sectional identities – class, occupation, gender
- First political parties – 1890s on
- Trade unions – marked expansion late 1880s (friendly societies smaller membership than Australia)
- Churches more firmly established and denominationally distinct – though sectarian conflict more muted than in Australia

Key periods of volunteering development

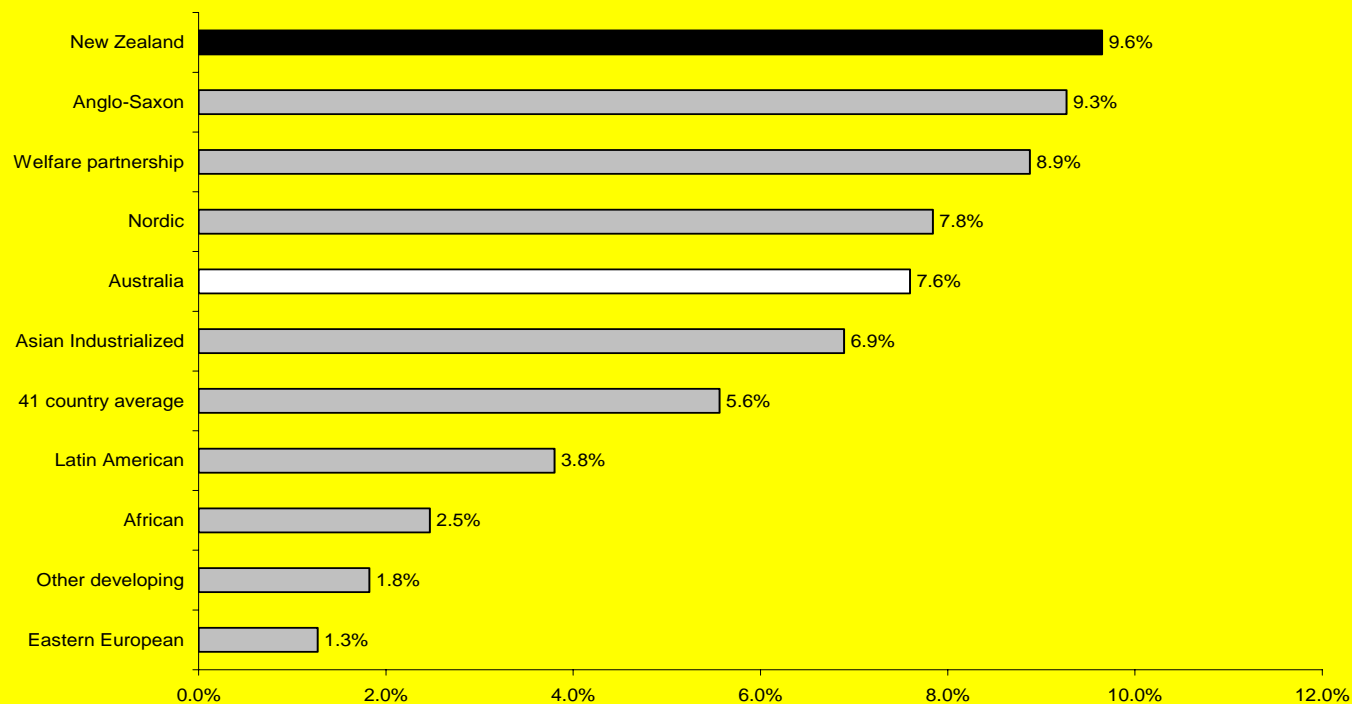
- Wartime patriotism and mixture of motivations
- Post World War II – combination of idealism, affluence and internationalism
- *Distinctiveness of historical conjunctures*

NZ Snapshot from the 2000s

- 97,000 non-profit organisations – 90% do not employ staff – more reliant on volunteers than most other countries
- 31% of population aged 12+ volunteer for NPIs @ average of 5 hours per week
- Volunteer workforce translates into nearly 134,000 full-time equivalents or 6.4% of economically active population – proportionately one of largest in the world
- Majority of volunteers concentrated in ‘expressive’ fields – culture & recreation, membership organisations
- Total NPI workforce (paid and volunteers as FTIs):
New Zealand: ‘Expressive’ = 49% ‘Service’ = 50%
Australia: ‘Expressive’ = 37% ‘Service’ = 61%

Total Non-profit Workforce as % Economically Active Population

Figure 2. Non-profit organisational workforce as a percent of economically active population, New Zealand vs. country groups



EAP data for all countries in this project come from International Labour Organization.